

→ GUILLOTINE IDEAL 5222 DIGICUT

PROGRAMMABLE POWER GUILLOTINE WITH HYDRAULIC CLAMP AND IR SAFETY CURTAIN – PERFECT FOR TRIMMING DIGITAL PRINT JOBS

520 mm cutting length | electro-mechanical blade drive | hydraulic clamp drive | clamping pressure infinitely adjustable (min. 200 daN / 440 lbs. – max. 1100 daN / 2420 lbs.) with optical indicator (pressure gauge) | foot pedal for pre-clamping plus cutting line indicator | false clamp plate for delicate work | power backgauge with fully programmable "EP" backgauge control module | electronic hand wheel for manual backgauge positioning with infinitely variable speed control (from very slow to very fast) | optical cutting line with bright and durable LEDs | spindle guided backgauge for precise positioning | adjustable backgauge with narrow separations (32 mm) and plastic gliders | two side lays on front and rear table | solid steel blade carrier and adjustable blade guides | high-quality blade made from "Solingen steel" | set of side tables (left and right) available at an extra cost | SCS (Safety Cutting System): light beam safety curtain to secure the working area on the front table; transparent safety cover on the rear table; main switch and safety lock with key; electronically controlled true two-hand operation; 24 volt controls (low voltage); patented IDEAL safety drive; automatic blade and clamp return from every position; disc brake for instant blade stop; blade changing device with covered cutting edge; blade depth adjustment from the outside of the machine; easy blade change from the front of the machine without removing covers.

Power supply: 230 V / 50 Hz / 1~¹. Motor performance (input capacity): blade drive 1.5 kW, backgauge drive 0.1 kW
 Dimensions (H x W x D): 1310 x 950/1650² x 1090 mm, Weight: 328/352³ kg, Colour: pearl grey.



¹ other voltages available

² width with side tables

³ weight with side tables



IDEAL 5222 DIGICUT
with optional side tables

"EP" BACKGAUGE CONTROL



Programmable backgauge control module for the power backgauge with digital display. High storage capacity of 99 programs with up to 99 steps in each program.

OPTICAL CUTTING LINE



The optical cutting line indicator with especially bright, durable LEDs guarantees easy aligning of the cutting marks on the paper stack for precise cuts.

FOOT PEDAL



The foot pedal can be used for pre-clamping when trimming bound brochures or as a mechanical cutting line indicator.

→ IDEAL 5222 DIGICUT

Cutting length	520 mm
Cutting height	80 mm
Narrow cut	22 / 90* mm
Table depth	520 mm
Power supply	230 V / 50 Hz

* without / with false clamp

⇒ EP BACKGAUGE CONTROL

PROGRAMMABLE »EP« CONTROL MODULE FOR THE POWER BACKGAUGE

Digital display for measurement readout in cm or inches (display accurate to 1/10 mm or 1/100 inch) | 10-button key pad for presetting of measurement | memory key for repeat cuts (manual) and additional automatic memory | 99 programs with 99 steps in each program (up to 9 repeat cuts can be integrated into a program as one single program step) | programmable EJECT function – for pushing out the paper | program runs automatically in the program and memory mode | "SET" function key for reference measurement | two programmable keys for quick setting of frequently needed measurements | self-diagnosis system with error indication on display



ELECTRONIC HAND WHEEL



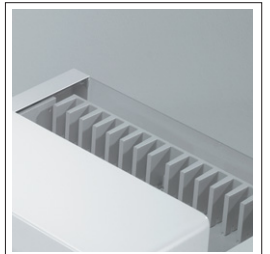
Electronic hand wheel for manual backgauge positioning with infinitely variable speed control (from very slow to very fast).

LIGHT BEAM SAFETY CURTAIN



The light beam safety curtain as a standard safety feature on this cutter ensures the highest level of safety and cutting convenience.

SAFETY COVER



The transparent safety cover on the rear table allows perfect viewing for precise aligning of the paper stack on the backgauge.

⇒ »EP« CONTROL MODULE

99 programs with 99 steps each
Memory key
Direct measurement input
Programmable push-out
Display readout in mm or inches